

*Have a happy time at Disneyland and a safe trip home. And, for a more care-free life at all times, be sure you and your family have the proper insurance protection. If you have any questions about your own insurance program — on your home, your car, your life or your health — call your local INA or PEG agent. You'll find his name in the yellow pages.*

*INA provides even broader service now, since the Pacific Employers Group (PEG), a California Insurance company, was acquired by INA in 1965. PEG Headquarters are in Los Angeles.*

*One of the Nation's leading all-lines insurance companies, INA was founded in Philadelphia's Independence Hall in 1792. During 1967, INA will celebrate its 175th year of service to the American public.*



Insurance Company of North America  
World Headquarters, Philadelphia

# Your GUIDE to Disneyland

© Walt Disney Productions

Another **INA** Service

Welcome to Disneyland

All of us in the Magic Kingdom hope that your visit today will be a happy and memorable one. Your enjoyment of this and future visits is the first consideration of all Disneylanders. As you explore Disneyland, we suggest that you keep this guide with you. The information it contains has been prepared to help make your visit as pleasant an experience as possible.

WALT DISNEY

DisneylandGuideMaps.com



*INA is happy to provide this Guide to help you enjoy your stay at Disneyland. Keep it as a memento of your visit.*

*Want to have the most fun during your visit to Disneyland? Need guidance on your travel plans during your stay in Southern California? Then be sure to visit Disneyland's official information center, Carefree Corner.*



*Carefree Corner is a public service of the more than 15,000 INA and PEG agents and brokers who serve the insurance-buying public. You are welcome at Carefree Corner, located on Main Street, U.S.A. INA's hostesses will be happy to meet you and answer your questions.*

## Table of Contents

	Page
General Information .....	2-3
The A-B-C's of Ticket Books .....	4
Guided Tour Information .....	4
Disneyland's Adventures and Attractions .....	5-7
Map of Disneyland .....	8-9
Main Street, U.S.A. ....	10-11
Adventureland .....	12-13
New Orleans Square .....	14-15
Frontierland .....	16-17
Fantasyland .....	18-19
Tomorrowland .....	20-21
Food and Refreshments .....	22-24
Shops and Stores .....	25-27
Your Entertainment Calendar .....	28-29
Free Shows and Exhibits .....	30
Index .....	31-33

## General Information

General information about Disneyland may be obtained at City Hall on the left side of Town Square as you enter the Magic Kingdom. As you explore the Park feel free to ask any employee for assistance.

Information about other Southern California recreational attractions and public transportation schedules may be obtained at Carefree Corner on Main Street, U.S.A. Sponsored by INA, this also is Disneyland's official Guest Registration Center.

### LOST AND FOUND

Lost and found facilities are maintained in the Global Van Lines Building, next to the Fire Station on Town Square, Main Street, U.S.A.

### PUBLIC TELEPHONES ☎

Public telephones are located throughout Disneyland. Ask any Disneylander for the location of the nearest one or refer to the area maps.

### LOCKER SERVICE

Facilities for checking purchases and garments are located in the Global Van Lines Building on Town Square, next to the Fire Station on Main Street, U.S.A. Locker service also is provided at the bus stop area just outside the Disneyland Main Entrance. Lockers large enough for suitcases are located near the tram and bus stations, west of the Main Entrance.

### POSTAGE STAMPS AND MAIL SERVICE

Stamps are available in vending machines located in each land, and at the Hallmark Communication Center on Main Street. Mail boxes for your letters and cards are located throughout Disneyland, with regular pick up for mailing out of the United States Post Office in Anaheim. There is no United States Post Office within Disneyland.

### PET CARE

Disneyland's Ken-L-Land provides pleasant facilities for your pet while you enjoy the Magic Kingdom itself. You may leave your pet in an airy, individual enclosure at a cost of 25 cents for the entire day. This charge includes a choice of Ken-L Rations pet food. Ken-L-Land is located to the right of the Main Gate Ticket Booths.

### LOST CHILDREN

Facilities for the care of lost children are maintained at the end of East Plaza Street off Main Street, U.S.A. The matron in charge will assist you.

### BANKING SERVICES

The Bank of America, located across Town Square from the City Hall, provides complete banking facilities. The Bank is open every day Disneyland is open, including Saturdays, Sundays, and Holidays, 10:00 a.m. to 4:00 p.m. Check cashing, for the amount of purchase only, is available after 4:00 p.m. at the ticket booth for Great Moments with Mr. Lincoln, also located on Town Square.

### BABY STATION

The Baby Station is located adjacent to the First Aid Center on East Plaza Street. Facilities are provided for changing infants, preparing formulas and warming bottles. Sorry, baby-sitting is not available.

### STROLLERS AND WHEEL CHAIRS

Strollers and wheel chairs are available for your use in Disneyland. They can be obtained for a nominal rental at the right side of the area just inside the Main Gate turnstiles.

### BANKAMERICARD

Your BankAmericard is accepted in most Disneyland shops, stores and restaurants.

### FIRST AID

Registered nurses are on duty at all times in the First Aid Center, located at the end of East Plaza Street, just off Main Street, U.S.A.

### REST ROOMS △

Rest rooms are located throughout Disneyland. Refer to the various area maps in this guide for the nearest one, or ask any Disneyland employee.

### PARK OPERATING HOURS

In the fall and winter, Disneyland is open Wednesday through Friday, from 10:00 a.m. until 6:00 p.m., and until 7:00 p.m. on Saturdays and Sundays. During most of this period, we are closed on Mondays and Tuesdays. On November 25 and 26, we will be open from 9:00 a.m. to 12:00 Midnight. During the Christmas Holidays, Disneyland will be open every day, from Monday, December 19, through Tuesday, January 3—after which time we will resume our Wednesday through Sunday schedule.

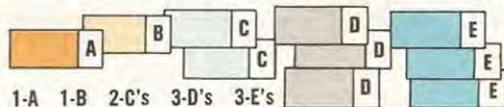
### WHEN LEAVING DISNEYLAND...

If you wish to return to Disneyland today, have your hand stamped at the Exit Gate before you leave the Park, also at the Disneyland Hotel Monorail Station, should you desire to exit and return via that location.

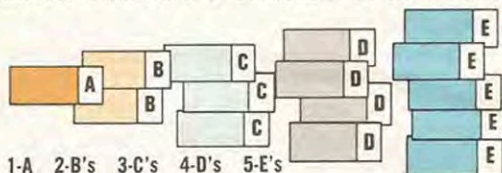
## the A-B-C's etc. OF DISNEYLAND TICKET BOOKS

Disneyland Ticket Books are a most convenient way to enjoy the Magic Kingdom. Both the Big 10 and Deluxe 15 Ticket Books include admission to Disneyland and a selection of adventures and attractions on an "A," "B," "C," "D" and "E" ticket basis.

**THE BIG 10** Ticket Book includes Admission to the Park and a selection of attractions as shown below:



**THE DELUXE 15** Ticket Book includes Admission to the Park and a selection of attractions as shown below:



*If you already have purchased a General Admission ticket, or you wish to enjoy additional adventures inside the Park, you may buy a 10-Adventure or a 15-Adventure Book at any Central Ticket Booth inside the Park. The 10-Adventure Book is \$3.25 and the 15-Adventure Book is \$4.00 for each guest. Refer to the area maps for locations.*

Prices subject to change without notice.

## Guided Tour Information

The popular Guided Tour is especially recommended for "first-time guests." Visitors are taken on an exciting tour of Disneyland by a charming Guide who tells the fascinating story of the Magic Kingdom's history and growth. The Guided Tour includes admission to Disneyland and a selection of six of the Park's popular attractions.

If you already have purchased a General Admission ticket you may buy a Guided Tour Ticket at the ticket booth adjacent to "Great Moments with Mr. Lincoln." Tour tickets, minus Main Gate admission, are \$3.00 for adults and \$2.75 for children.

## Adventures and Attractions

### A coupon or 10¢

**MAIN STREET HORSE CARS** (Main Street)  
Board a horse-drawn trolley as it travels down the main street of 60 years ago.



**HORSELESS CARRIAGE** (Main Street)  
A trip down Main Street aboard a replica of America's classic autos.

**OMNIBUS** (Main Street)  
Ride to the entrance of the four "lands" on a double-decker bus.



**FIRE ENGINE** (Main Street)  
"Answer the alarm" in Disneyland's very own fire wagon.

**SURREY** (Main Street)  
Travel down Main Street in an elegant "surrey with the fringe on top."



**SLEEPING BEAUTY CASTLE** (Fantasyland)  
See diorama scenes from the popular Walt Disney movie, "Sleeping Beauty."

**KING ARTHUR CARROUSEL** (Fantasyland)  
Ride to the land of fantasy on one of the Carousel's 72 prancing steeds.



### B coupon or 25¢

**MAIN STREET CINEMA** (Main Street)  
Enjoy the greats of the silent screen era featuring moviedom's brightest stars.



**MOTOR BOAT CRUISE** (Fantasyland)  
Guide your motorboat through treacherous rapids and tricky currents.

**FANTASYLAND THEATRE** (Fantasyland)  
View highlights of Walt Disney movies and cartoons.



**SWISS FAMILY TREEHOUSE** (Adventureland)  
See the Swiss Family Robinson's tree-top home and enjoy an aerial view of Disneyland.

**CASEY JR. CIRCUS TRAIN** (Fantasyland)  
The bright, gay circus train who "knew he could," travels a scenic route.



**COLUMBIA SAILING SHIP** (Frontierland)  
Glimpse America's seafaring history aboard a replica of the first American ship to girdle the globe. See the maritime museum below decks.

**MAD TEA PARTY** (Fantasyland)  
Whirl and twirl in the Mad Hatter's wildly spinning cups and saucers.



## C coupon or 35¢



**MIKE FINK KEEL BOATS (Frontierland)**  
A backwood water journey to adventure on the Rivers of America.

**RICHFIELD'S AUTOPIAS (Fantasyland and Tomorrowland)**  
Youngsters of all ages can navigate these modernistic freeways of the future.



**SHOOTING GALLERIES (Frontierland, Adventureland)** Test your sharpshooting skills at still and moving targets.

**PETER PAN FLIGHT (Fantasyland)**  
Fly over moonlit London and on to Never-Never Land aboard a pirate galleon.



**DUMBO FLYING ELEPHANTS (Fantasyland)**  
Soar high over Fantasyland aboard the elephant with aerodynamic ears.

**MR. TOAD'S WILD RIDE (Fantasyland)**  
A hilariously hair-raising automobile ride through old London.



**SNOW WHITE'S ADVENTURES (Fantasyland)**  
Travel through the Dark Forest to the Seven Dwarf's Diamond Mine.

**ALICE IN WONDERLAND (Fantasyland)**  
Re-live the fantastic adventures of Alice in her down-the-rabbit-hole world.



## D coupon or 60¢

**MARK TWAIN STEAMBOAT (Frontierland)**  
Ride the gleaming sternwheeler as it travels around the Rivers of America.



**STORYBOOK LAND CANAL BOATS (Fantasyland)**  
View the world of fantasy and fairy tales from quaint Dutch canal boats.

**SKYWAY (Tomorrowland, Fantasyland)**  
View the entire Magic Kingdom from new four-seat skyway buckets.



**MINE TRAIN RIDE (Frontierland)**  
Take the Western Mine Train through Nature's Wonderland, Rainbow Caverns, and much more.



**SANTA FE & DISNEYLAND RAILROAD (Main Street, New Orleans Square, Frontierland, Tomorrowland)**  
Board one of five trains for a grand circle tour of the Magic Kingdom, and a journey through the Grand Canyon into the fantastic Primeval World.

**INDIAN WAR CANOES (Frontierland)**  
Row your own war canoe under the guidance of a real Indian Guide. (Saturdays and Sundays only)



**TOM SAWYER ISLAND RAFTS (Frontierland)**  
Explore Tom Sawyer Island with its many caves and Fort Wilderness.



**E coupon or adults 75¢, children 65¢**



**PACK MULES (Frontierland)**  
See Nature's Wonderland from the back of a sturdy pack mule.

**JUNGLE RIVER CRUISE (Adventureland)**  
Travel through tropical jungles and exotic areas of the world on a jungle launch.



**GREAT MOMENTS WITH MR. LINCOLN** presented by LINCOLN SAVINGS & LOAN ASSOCIATION (Main Street)

Mr. Lincoln "comes to life" in this world-acclaimed attraction. Young people, up to 17 years old, receive a complimentary ticket with their Disneyland admission.

**DISNEYLAND-ALWEG MONORAIL TRAINS (Tomorrowland)**  
Circle above and around Disneyland on the transportation system of tomorrow.



**MATTERHORN BOBSLEDS (Tomorrowland)**  
Race down and around "snow-covered" slopes in a thrilling bobsled run.

**ENCHANTED TIKI ROOM** presented by UNITED AIR LINES (Adventureland)  
A Polynesian Paradise, where 225 birds, flowers and tropical tikis entertain.

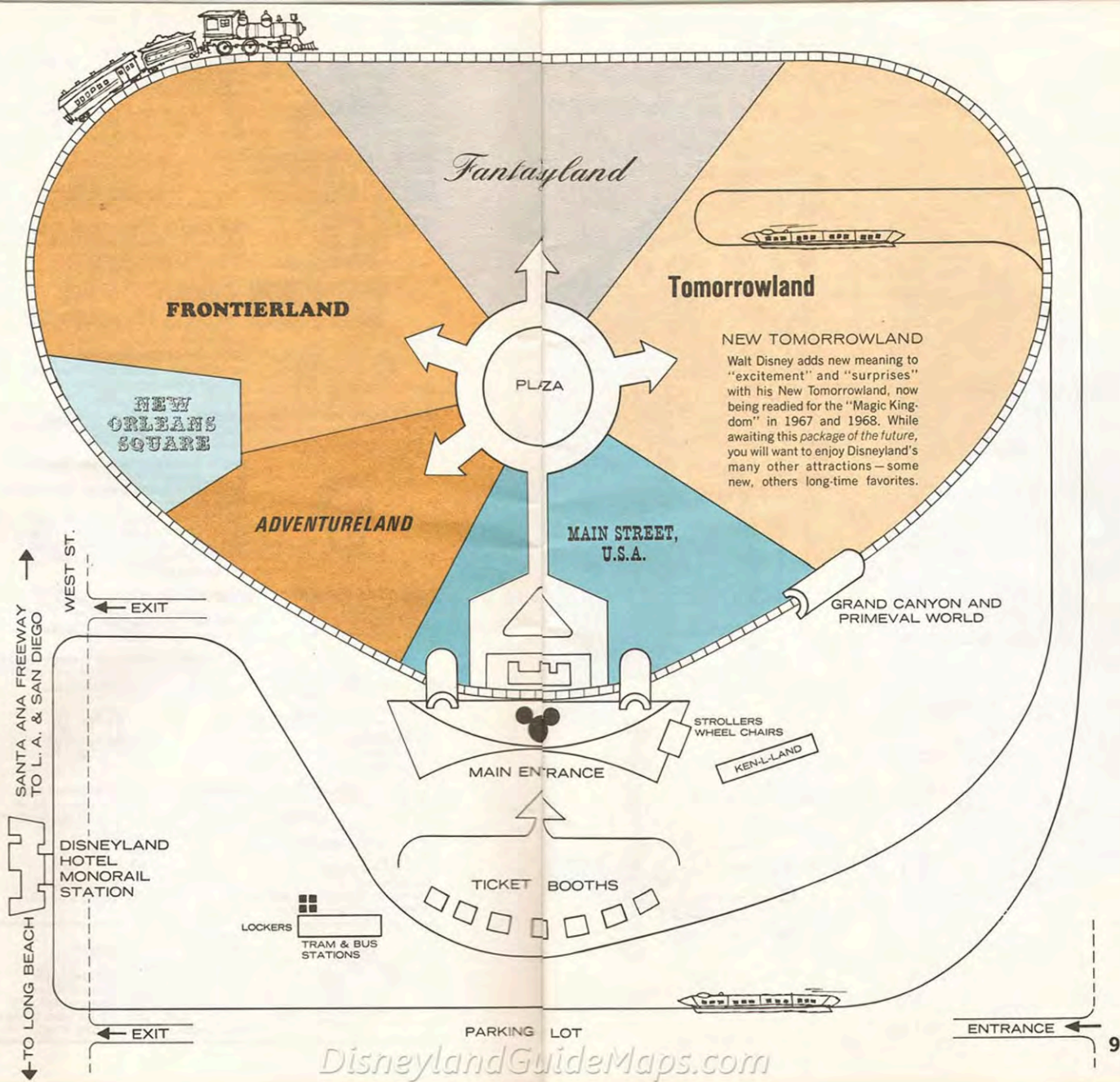


**SUBMARINE VOYAGE (Tomorrowland)**  
Journey through "liquid space" on an exciting undersea cruise to the North Pole.

**"IT'S A SMALL WORLD"** presented by BANK OF AMERICA (Fantasyland)  
Join the happiest crew that ever sailed around the world.

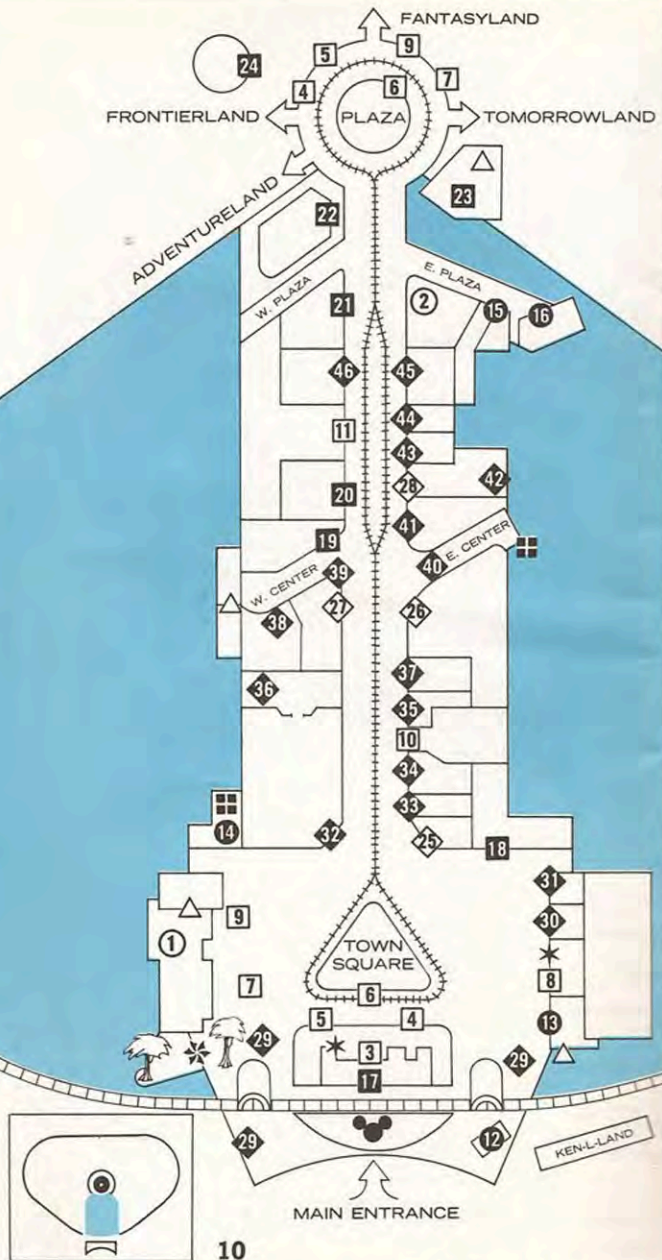


**Coming Soon!**  
**PIRATES OF THE CARIBBEAN (New Orleans Square)**  
Sail through the wildest adventure that ever rocked the Spanish Main. It takes place in the Magic Kingdom's newest "land," and will be Disneyland's most spectacular adventure of all.



# MAIN STREET, U.S.A.

Letters in quotes by each adventure and attraction show ticket used.



## INFORMATION AND ASSISTANCE

- ① Disneyland City Hall
- ② INA Carefree Corner

## ADVENTURES AND ATTRACTIONS

- ③ Santa Fe & Disneyland Railroad "D"
- ④ Omnibus "A"
- ⑤ Horseless Carriage "A"
- ⑥ Main Street Horse Cars "A"
- ⑦ Surrey "A"
- ⑧ Great Moments with Mr. Lincoln presented by Lincoln Savings & Loan Association "E"
- ⑨ Fire Engine "A"
- ⑩ Main Street Cinema "B"
- ⑪ Penny Arcade

## SERVICES

- ⑫ Strollers and Wheel Chairs
- ⑬ Bank of America
- ⑭ Global's Storage Lockers and Lost and Found
- ⑮ Baby Station
- ⑯ First Aid and Lost Children

## FOOD AND REFRESHMENTS

- ⑰ Train Depot Snack Bar
- ⑱ Hills Bros. Coffee House and Garden
- ⑲ Carnation Ice Cream Parlor
- ⑳ Sunkist Citrus House
- ㉑ Coke Refreshment Corner
- ㉒ Plaza Pavilion
- ㉓ Plaza Inn
- ㉔ Carnation Plaza Gardens

## FREE SHOWS AND EXHIBITS

- ㉕ Wurlitzer Music Hall
- ㉖ Swift's Market House, C & H Sugar Corner, and Sunsweet Growers

- ㉗ Upjohn Pharmacy
- ㉘ Eastman Kodak Exhibit

## SHOPS AND STORES

- ㉙ Souvenir Stands
- ㉚ Wonderland Music Shop
- ㉛ Mad Hatter Shop
- ㉜ Emporium (film)
- ㉝ Magic Shop
- ㉞ Tobacco Shop
- ㉟ Jewelry Store
- ㊱ Crystal Arcade
- ㊲ Main Street Gifts
- ㊳ Book and Candle Shop
- ㊴ Flower Market
- ㊵ Art Festival
- ㊶ Hallmark Communication Center

- ㊷ Camera Shop (film)

- ㊸ Timex Watches
- ㊹ Silhouette Studio

- ㊺ China Shop
- ㊻ Candy Palace

## ☒ TELEPHONES

## △ REST ROOMS

## \* TICKET BOOTHS

## ✳️ GUIDED TOUR GARDEN

# ADVENTURELAND

Letters in quotes by each adventure and attraction show ticket used.

## ADVENTURES AND ATTRACTIONS

- 1 United Air Lines Enchanted Tiki Room "E"
- 2 Big Game Safari "C" Shooting Gallery
- 3 Jungle River Cruise "E"
- 4 Swiss Family Treehouse "B"

## FOOD AND REFRESHMENTS

- 5 Tahitian Terrace
- 6 Sunkist, "I Presume"
- 7 Aunt Jemima's Kitchen

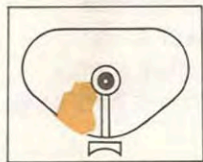
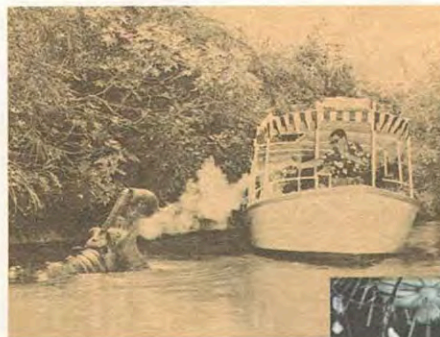
## SHOPS AND STORES

- 8 Adventureland Bazaar
- 9 Tiki's Tropical Traders
- 10 Adventureland Traders (film)

## ☒ TELEPHONES

## △ REST ROOMS

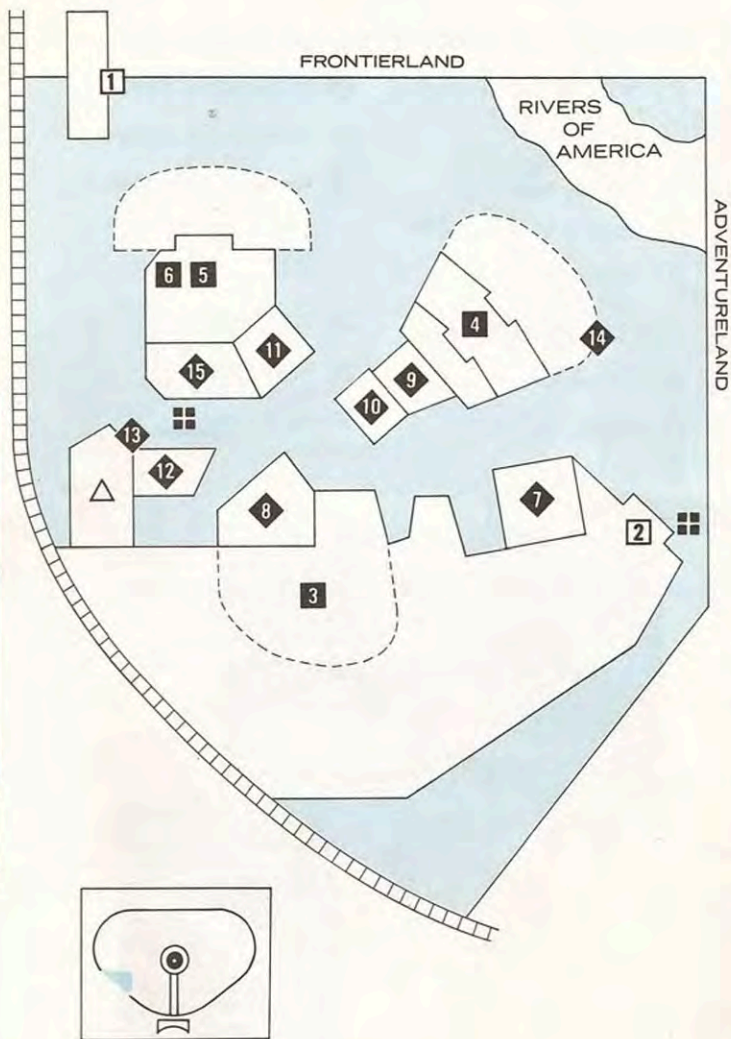
## \* TICKET BOOTHS





## NEW ORLEANS SQUARE

Letters in quotes by each adventure and attraction show ticket used.



### ADVENTURES AND ATTRACTIONS

- 1 Santa Fe & Disneyland Railroad "D"
- 2 Pirates of the Caribbean (coming soon)
- 3 The Blue Bayou Restaurant (coming soon)
- 4 The Creole Cafe
- 5 The French Market
- 6 The Mint Julep Bar

### SHOPS AND STORES

- 7 One-Of-A-Kind Shop
- 8 Le Gourmet
- 9 Laffite's Silver Shop
- 10 Cristal d'Orleans
- 11 Mlle. Antoinette's Parfumerie
- 12 Le Forgeron
- 13 Portrait Artist
- 14 Candy Cart
- 15 Flower Shop (film)

### FOOD AND REFRESHMENTS

- ☐☐☐☐ TELEPHONES
- △ REST ROOMS



# FRONTIERLAND

Letters in quotes by each adventure and attraction show ticket used.

## ADVENTURES AND ATTRACTIONS

- 1 Shooting Gallery "C"
- 2 Mark Twain Steamboat "D"
- 3 Columbia Sailing Ship "D" (summer only)
- 4 Mine Train Ride "D"
- 5 Pack Mules "E"
- 6 Tom Sawyer Island Rafts "D"
- 7 Mike Fink Keel Boats "C"
- 8 Columbia Museum "B" (winter only)
- 9 Indian War Canoes "D" (in winter, Sat. & Sun. only)
- 10 Santa Fe & Disneyland Railroad "D"

## SHOPS AND STORES

- 19 Frontier Trading Post (film)
- 20 Pendelton Woolen Mills Store
- 21 Davy Crockett Arcade  
Mexican Village  
Jemrocks  
Frontierland Hats  
Frontier Print Shop  
Bonekraft  
Souvenir Stand (film)
- 22 Indian Trading Post (film)
- 23 Frontierland Camera Shop (film)

## FREE SHOWS AND EXHIBITS

- 24 Pepsi-Cola Golden Horseshoe Revue
- 25 Indian Village

## ☐ TELEPHONES

## △ REST ROOMS

## \* TICKET BOOTHS

## FOOD AND REFRESHMENTS

- 11 Casa de Fritos
- 12 Pepsi-Cola Golden Horseshoe
- 13 Oaks Tavern
- 14 Malt Shop
- 15 Cone Shop
- 16 Aunt Jemima's Kitchen
- 17 Indian Village
- 18 Fort Wilderness Snack Bar



# Fantasyland

Letters in quotes by each adventure and attraction show ticket used.

## ADVENTURES AND ATTRACTIONS

- 1 Sleeping Beauty Castle "A"
- 2 Peter Pan Flight "C"
- 3 King Arthur Carrousel "A"
- 4 Snow White's Adventures "C"
- 5 Mad Tea Party "B"
- 6 Fantasyland Theatre "B"
- 7 Dumbo Flying Elephants "C"
- 8 Skyway to Tomorrowland "D"
- 9 Casey Jr. Circus Train "B"
- 10 "It's a Small World" presented by Bank of America "E"
- 11 Storybook Land Canal Boats "D"
- 12 Motor Boat Cruise "B"
- 13 Alice in Wonderland "C"
- 14 Mr. Toad's Wild Ride "C"

## FOOD AND REFRESHMENTS

- 15 Welch's Grape Juice Bar
- 16 Character Food Stands
- 17 Chicken of the Sea  
Pirate Ship Restaurant

## SHOPS AND STORES

- 18 Arts and Crafts
- 19 Castle Candy Shoppe
- 20 Tinkerbell Toy Store
- 21 Merlin's Magic Shop (film)
- 22 Mad Hatter
- 23 Souvenir Stands (film)
- 24 Caricatures

## ☒ TELEPHONES

## △ REST ROOMS

## \* TICKET BOOTHS



# Tomorrowland

Letters in quotes by each adventure and attraction show ticket used.

## ADVENTURES AND ATTRACTIONS

- 1 Richfield Autopias "C"
- 2 Skyway to Fantasyland "D"
- 3 Santa Fe & Disneyland Railroad "D"
- 4 Disneyland-Alweg Monorail Trains "E"
- 5 Submarine Voyage "E"
- 6 Matterhorn Bobsleds "E"

## SHOPS AND STORES

- 7 Hobbies, Souvenirs and Hats (film)

## FREE SHOWS AND EXHIBITS

- 8 Monsanto Home of the Future
- 9 Bell System Picturephone

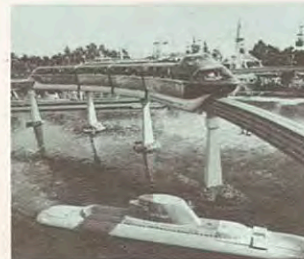
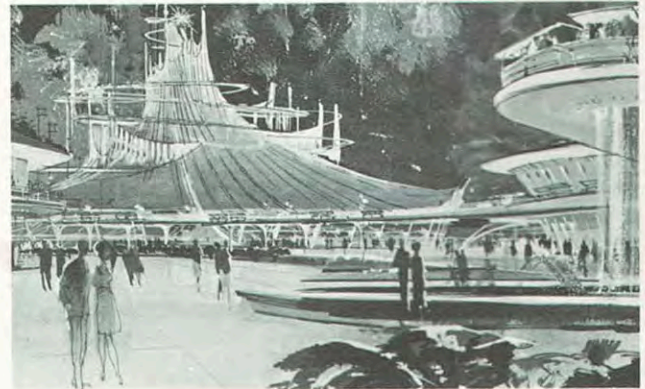
## \* TICKET BOOTHS

### NEW TOMORROWLAND ...

New Tomorrowland, showcase for some of America's leading companies, will be Walt Disney's proof that today's technology and know-how can give us the world of the future NOW.

Summer '67 will see about one-half of the huge new land (twice the size of the original exhibit area) receiving first guests. Initial attractions will include spectacles sponsored by such companies as General Electric, Monsanto, Douglas Aircraft, and the Bell Telephone System.

And in 1968, Walt and his "imagineering" staff at WED Enterprises, Inc., will complete the new land with still other new rides and exhibits.



# Food and Refreshments

Disneyland has a large variety of restaurants and refreshment centers. You will discover a menu to please every palate and pocketbook in Disneyland.

## MAIN STREET, U.S.A.

### Carnation Ice Cream Parlor

Salads, hot dogs, hamburgers and beverages. Specializing in sodas and fancy sundaes.

### Carnation Plaza Gardens

Salads, sandwiches, hot dogs, hamburgers and beverages. Featuring sodas, sundaes, malts and ice cream cones.

### Coke Refreshment Corner

Featuring Coca-Cola, wrapped sandwiches and chips.

### Hills Bros. Coffee House and Garden

Featuring hot and cold beverages, sandwiches, Danish pastry, and other desserts.

### Plaza Inn

Price Range: 35 cents to \$1.95.

Breakfast, Luncheon and Dinner: Buffet a la carte, wide selection of exotic salads, hot sandwiches, roast chicken, pot roast, chopped sirloin steak, French pastries, home-made pies and layer cake; children's portions.

### Plaza Pavilion

Price Range: 95 cents to \$1.50.

Luncheon and Dinner: A la carte salads, choice hot entrees, hot sandwiches, special desserts and children's plates.

### Sunkist Citrus House

Featuring fresh orange juice, lemonade, coffee, rolls, lemon tarts and frozen juice bars.

### Train Depot Snack Bar

Hot dogs, popcorn and beverages.

## ADVENTURELAND

### Sunkist, "I Presume"

Featuring fresh orange juice, lemonade, donuts, coffee and jungle juleps.

### Tahitian Terrace—Waitress Service

Price Range: Luncheon, 50 cents to \$1.95; Dinner, 50 cents to \$3.75.

Authentic Polynesian specialties, exotic salads and sandwiches, Teriyaki steaks, tall coolers, and children's plates.

## NEW ORLEANS SQUARE

### The French Market

Price Range: 50 cents to \$1.75.

Louisiana Fried Chicken, barbecued beef and ham platters, hot meat sandwiches, sea food, salads, desserts, beverages, and children's menus.

### The Creole Cafe—Waitress Service

Price Range: 25 cents to \$1.25.

Featuring continental coffees—espresso, capuccino, et cetera—fabulous sandwiches, French pastries, and ice cream parlor delicacies of yore.

### The Mint Julep Bar

Frosted mint juleps and ice cream confections.

## FRONTIERLAND

### Aunt Jemima's Kitchen

Price Range: 20 cents to \$1.85.

Featuring plain and fancy pancakes and waffles, ham, bacon, sausage, chicken a la king, eggs, and beverages.

### Casa de Fritos

Price Range: 30 cents to \$1.65.

Featuring Mexican food specialties, combination plates, tamales, enchiladas, Fritos, chips, chili, and beverages.

### Cone Shop

Ice cream cones.

### Fort Wilderness Snack Bar—(Tom Sawyer Island)

Hot dogs, candy, cider and coffee.

### Indian Village

Foot long hot dogs, beverages, cookies, brownies and popcorn.

### Malt Shop

Assorted flavored malts, hamburgers and hot dogs.

### Oaks Tavern—Short Orders

Chili and beans, hamburgers, hot dogs, cold and hot beverages.

### Pepsi-Cola's Golden Horseshoe

Featuring Pepsi-Cola, wrapped sandwiches and chips.

## FANTASYLAND

### Character Food Stands

Sandwiches, hamburgers, hot dogs, juices, hot and cold beverages.

### Pirate Ship

Price Range: 10 cents to 90 cents.

Featuring Chicken of the Sea tuna, hot tuna pie, tuna burger, tuna sandwiches, shrimp cocktail and beverages.

### Welch's Grape Juice Bar

Welch's pure grape juice and grape juice bars.



## Shops and Stores

### MAIN STREET, U.S.A.

**Art Festival**—Have your own pastel profile drawn in a few minutes.

**Book and Candle Shop**—A complete selection of both items.

**Camera Shop**—Film and other photographic equipment. Twenty-four hour Kodak processing is available on your color slides and movies.

**Candy Palace**—For the most discriminating sweet tooth.

**China Shop**—Decorations and gifts in ceramic and glass.

**Crystal Arcade**—Glassblower at work and a Book and Candle Shop with a wide selection of Walt Disney books as well as candles from all over the world.

**Emporium**—Featuring a complete selection of gifts for the entire family.

**Flower Market**—Unusual man-made flowers and floral pieces.

**Hallmark Communication Center**—A complete display of Hallmark greeting cards, party packs and other paper items.

**Jewelry Store**—Large selection of specially-designed jewelry.

**Main Street Gifts**—Selection of Walt Disney souvenir items and decorated soaps.

**Mat Hatter Shop**—Colorful variety of unique Disneyland hats.

**Magic Shop**—Unusual selection of tricks, masks, gadgets and souvenirs.

**Silhouette Studio**—Artists create and frame silhouettes while you wait.

**Swift's Market House**—An old-fashioned general store complete to cider and dill pickles. Includes C & H Sugar Corner, featuring a variety of penny candies. Also, **Sunsweet Growers** displays a variety of dried fruits.

**Timex Watches**—A complete display of Timex timepieces.

**Tobacco Shop**—Tobaccos and smoking accessories from around the world.

**Wonderland Music Shop**—Listening pleasure for every taste, including favorites from Disney films.

### ADVENTURELAND

**Adventureland Bazaar**—Rare products and gifts from all over the world in a jungle atmosphere. Includes GUATEMALAN WEAVERS, LEE BROS. and MAGIC CARPET BAZAAR.

**Adventureland Traders**—South Sea Island apparel in a colorful assortment.

**Tiki's Tropical Traders**—Hats, souvenirs.

### NEW ORLEANS SQUARE

**One-Of-A-Kind Shop**—Exactng customers will find choice antiques, reproductions, and other unique gifts gathered from all parts of the world.

**Le Gourmet**—Unusual cooking and serving accessories available for purchase, along with a selection of exotic foods and featuring spices by **Spice Islands**.

**Laffite's Silver Shop**—A silversmith creates works of art on the spot, surrounded by forge, molds and other tools of his trade. He also makes minor repairs.

**Cristal d'Orleans**—An artisan provides on-the-spot services to his guests, by making special glass objects or placing items of personal value, such as rings and class pins, in bottles.

**Mlle. Antoinette's Parfumerie**—A complete line of select perfumes, and the services of a perfumer to blend unique fragrances.

**Le Forgeron**—Shoppers can choose among metal flowers and rare stained glass artifacts.

**Flower Shop**—Artificial flowers made from a number of unusual materials not always found in this type of merchandise; also, flower-decorated hats.

### FRONTIERLAND

**Camera Shop**—Complete line of film, still and movie cameras for sale or rent, film accessories, and processing mailers for photo finishing.

**Davy Crockett Arcade**—Includes the MEXICAN SHOP; FRONTIERLAND HATS; JEMROCKS, displaying unusual jewelry; the FRONTIER PRINT SHOP, with custom head-lined newspapers and stationery; a BONECRAFT SHOP, featuring jewelry carved of bone, ivory and rare woods; and a SOUVENIR STAND.

**Frontier Trading Post**—Western items, Indian apparel and gifts.

**Indian Trading Post**—A re-creation of an Indian store featuring authentic Indian gifts.

**Pendleton Woolen Mills Store**—A complete selection of woolen fabrics and fashions for men, women and children.

### FANTASYLAND

**Arts and Crafts**—Features a unique selection of clocks and other imports.

**Caricatures**—Have your caricature made in minutes.

**Castle Candy Shoppe**—A variety of unusual candies.

**Mad Hatter**—Hats of every size, shape and color.

**Merlin's Magic Shop**—A medieval setting for a large selection of magic supplies and tricks.

**Souvenir Stands**—Four outdoor stores with a selection of Disneyland souvenirs.

**Tinkerbell Toy Store**—Toys for children of all ages.

### TOMORROWLAND

**Hobbies and Souvenirs**—An outdoor stand with model kits and other hobby material.

# Your Disneyland Entertainment Calendar

The popular 16-piece Disneyland Band performs for your enjoyment daily, as follows:

- 10:30 a.m.-10:45 a.m.**—Main Street Parade and Town Square Concert.
- 11:00 a.m.-11:40 a.m.**—March through Adventureland and concert aboard Mark Twain.
- 12:15 p.m.- 1:15 p.m.**—Daily Concert at Plaza Gardens.
- 5:00 p.m.- 5:30 p.m.**—Main Street Parade and Retreat Ceremony.

In addition, the following special musical groups entertain throughout the Park at the times and places noted:

- 2:15 p.m.- 3:00 p.m.**—Keystone Kops—  
**3:30 p.m.- 4:30 p.m.** Town Square  
Plaza Hub
- Polka Band—  
Fantasyland  
Matterhorn Bobsleds
- Strawhatters—  
Rivers of America

The **Pepsi-Cola Golden Horseshoe Revue** is performed five times daily in its own "saloon" in Frontierland. Show times are 11:30 a.m., 1:00, 2:30, 4:00 and 5:15 p.m.

**Indian Village, Frontierland**—The "Old West" comes alive during authentic ceremonial dancing, twice each hour on Saturdays, Sundays, and Holidays, 10:00 a.m. to 6:00 p.m.

**On a Bicycle Built for Four**, the Dapper Dans entertain throughout Disneyland on weekends and Holidays, from 11:00 a.m. to 6:00 p.m.

**Gonzales Trio**—The El Zocalo rings with familiar Latin tempos provided by the trio, performing in Frontierland on weekends and Holidays, from 11:00 a.m. to 6:00 p.m.

**Gunfighters**—A band of desperados battle it out with the Disneyland Marshal and Deputy, hold up trains, rob the Golden Horseshoe, and pose for pictures in Frontierland on weekends and Holidays, from 10:00 a.m. to 6:00 p.m.

**Mountain Climbers**—Hans and Otto climb the icy slopes of the treacherous Matterhorn ten times a day on weekends and Holidays, from 10:00 a.m. to 6:00 p.m.

The **Space Couple** from "another world" serve as host and hostess at the entrance to Tomorrowland, providing information about Walt Disney's new World of the Future, now under construction. They also pose with our guests for pictures.

**Royale Street Bachelors**—Sparkling, toe-tapping, Dixieland melodies are heard in the New Orleans area, offered by the popular "Bachelors," daily, from 11:00 a.m. to 6:00 p.m.

**Honky-tonk piano player**, Bobbie Rhoades, can be heard on weekends near the Creole Cafe, from 11:00 a.m. to 6:00 p.m.

**Shoeshine Boys**, Teddy and Kenny, are shining and dancing at the same old stand in New Orleans Square on weekends and Holidays, from 10:00 a.m. to 6:00 p.m.

**Delta Ramblers**—Parading through the New Orleans area and performing at The French Market, these favorites pour out Dixieland melodies from 10:00 a.m. to 5:00 p.m., weekends and Holidays. Featured dancing waiters are Gene and Eddie.

**Mickey Mouse and Friends**, including Pluto, Goofy, Alice in Wonderland, Mad Hatter, The Three Pigs and Big Bad Wolf, greet our guests at the Main Gate and entertain throughout Fantasyland, from 10:00 a.m. to 6:00 p.m.

## THANKSGIVING CELEBRATION

On Friday and Saturday Nights, November 25 and 26, we will feature such outstanding groups as Bill Elliott and his Orchestra, The Mustangs, the Royal Tahitians, Young Men from New Orleans, and the Firehouse Five plus Two, performing throughout the Park until Midnight.

## CHRISTMAS HOLIDAYS

Beginning December 17 and continuing through January 2, Disneyland will feature "Fantasy on Parade" twice daily.

During the week between Christmas and New Year's, special evening entertainment will include Bill Elliott and his Orchestra, the Royal Tahitians, Young Men from New Orleans, Nellie Lutchter Trio, and The Mustangs, nightly until Midnight.

At various times throughout the Christmas Holidays, special guest appearances will be made by the official Rose Bowl Bands, plus visiting bands from out of State, who will be participating in the Tournament of Roses Parade.

## NEW YEAR'S EVE PARTY

A sparkling highlight of the Disneyland Winter Season is the world's biggest and safest New Year's Eve Party when, during this one night only, guests can enjoy all of the Park's rides and attractions (except shooting galleries) for six full hours, from 8:00 p.m. until Two in the Morning, for just the special admission price. Popular entertainment, dance bands, and special activities to "ring in" the New Year will be featured.



## Free Shows and Exhibits

In addition to the many Disneyland adventures and attractions, you will enjoy visiting the outstanding free shows and exhibits sponsored by many nationally-famous companies for your enjoyment.

### MAIN STREET, U.S.A.

**Eastman Kodak Exhibit**—Free photo information and assistance and minor camera adjustments are performed free of charge.

**INA's Carefree Corner**—Disneyland's Official Information and Registration Center. Sign the guest book and then pick up your complimentary copy of the Declaration of Independence when you leave Disneyland.

**Swift's Market House**—The General Store of Grandfather's Day, complete to package goods and a party line wall telephone. **C & H Sugar Corner** features old fashioned penny candy, as well as unique, colored sugar crystals. **Sunsweet Growers** displays a variety of dried fruits.

**Upjohn Pharmacy**—An accurate re-creation of an 1890 era drug store. Be sure to pick up your free Unicap vitamins while visiting.

**Wurlitzer Music Hall**—See a complete display of pianos and organs and enjoy the daily organ concerts.

### FRONTIERLAND

**Pepsi-Cola Golden Horseshoe Revue**—A way-out-West variety show which has delighted millions of Disneyland guests with its singing, dancing and comedy entertainment.

### TOMORROWLAND

**Bell System Picturephone**—The telephone of the future, where you can see the person you are calling.

**Monsanto Home of the Future**—This "years ahead" home shows how science will shape the dwelling of tomorrow with the use of plastics.

## INDEX

"A" Coupon Attractions	5
Adventureland Bazzar	12, 26
Adventureland Traders	12, 26
Alice in Wonderland	6, 18
Art Festival	10, 25
Arts and Crafts Shop	18, 27
Aunt Jemima's Kitchen	16, 23
"B" Coupon Attractions	5
Baby Station	3, 10
BankAmericard	3
Banking Services	3, 10
Bell System Picturephone	20, 30
Blue Bayou Restaurant, The	14, 23
Book and Candle Shop	10, 25
Calendar of Events	28, 29
Camera Shops	10, 16, 25, 27
Candy Cart	14
Candy Palace	10, 25
Caricatures	18, 27
Carnation Ice Cream Parlor	10, 22
Carnation Plaza Gardens	10, 22
Casa de Fritos	16, 23
Casey Jr. Circus Train	5, 18
Castle Candy Shop	18, 27
"C" Coupon Attractions	6
C & H Sugar	10, 30
Character Food Stands	18, 24
Chicken of the Sea Pirate Ship	18, 24
China Shop	10, 25
Christmas Holidays	3, 29
Cinema, Main-Street	5, 10
City Hall	2, 10
Coke Refreshment Corner	10, 22
Columbia Sailing Ship and Museum	5, 16
Coming Attractions	7, 9, 20
Cone Shop	16, 24
Creole Cafe, The	14, 23
Cristal d'Orleans	14, 26
Crystal Arcade	10, 25
"D" Coupon Attractions	6, 7
Davy Crockett Arcade	16, 27
Disney Characters	29
Disneyland Band	28
Dumbo Flying Elephants	6, 18
"E" Coupon Attractions	7
Eastman Kodak Exhibit	10, 30
Emporium	10, 25
Enchanted Tiki Room	7, 12
Fantasyland Theatre	5, 18
Fire Engine	5, 10
First Aid	3, 10

Flower Market	10, 25
Fort Snack Bar	16, 24
French Market, The	14, 23
Frontierland Camera Shop	16, 27
Frontier Trading Post	16, 27
Glass Blowers	10, 14, 25
Global Van Lines' Lockers and Lost & Found	2, 10
Great Moments with Mr. Lincoln	7, 10
Guatemalan Weavers	12, 26
Guided Tours	4, 10
Hallmark Communications Center	10, 25
Hat Shop	14
Hills Bros. Coffee House and Garden	10, 22
Hobbies and Souvenirs	20, 27
Horse Cars	5, 10
Horseless Carriage	5, 10
Hours	29
INA Carefree Corner	2, 10, 30
Indian Trading Post	16, 27
Indian Village	16, 24
Indian War Canoes	7, 16
Information, General	2, 3
"It's a Small World"	7, 18
Jewelry Store	10, 25
Jungle River Cruise	7, 12
Ken-L-Land	2, 10
King Arthur Carrousel	5, 18
Laffite's Silver Shop	14, 26
Lee Bros	12, 26
Le Forgeron	14, 26
Le Gourmet	14, 26
Locker Service	2, 10
Lost and Found	2, 10
Lost Children	3, 10
Mad Hatter	10, 18, 20, 25, 27
Mad Tea Party	5, 18
Mlle. Antoinette's Parfumerie	14, 26
Magic Carpet Bazaar	12, 26
Magic Shops	10, 18, 25, 27
Mail Service	2
Main Street Gifts	10, 25
Malt Shop	16, 24
Mark Twain Steamboat	6, 16
Matterhorn Bobsleds	7, 21
Mike Fink Keel Boats	6, 16
Mine Train Ride	6, 16
Mint Julep Bar, The	14, 23
Monorail Trains	7, 20
Monsanto Home of the Future	20, 30
Motor Boat Cruise	5, 18
Mr. Toad's Wild Ride	6, 18
New Year's Eve Party	29
Oaks Tavern	16, 24
Omnibus	5, 10
One-Of-A-Kind Shop	14, 26

Pack Mules	7, 16
Park Operating Hours	3
Pendleton Woolen Mills Store	16, 27
Pepsi-Cola Golden Horseshoe Revue	16, 24, 28, 30
Perfumer	14, 26
Pet Care Facilities	2, 10
Peter Pan Flight	6, 18
Pirates of the Caribbean	7
Plaza Inn	10, 22
Plaza Pavilion	10, 22
Portrait Artist	14
Postage Stamps	2
Primeval World	7, 9
Print Shop	16, 26
Rafts, Tom Sawyer Island	7, 16
Rest Rooms	3 (see area maps)
Richfield Autopias	6, 20
Santa Fe & Disneyland Railroad	7, 10, 14, 16, 20
Shooting Galleries	6, 12, 16
Shops and Stores	25, 26, 27
Shows and Exhibits	30
Silhouette Studio	10, 25
Silversmith	14, 26
Skyways	6, 18, 20
Sleeping Beauty Castle	5, 18
Snow White's Adventures	6, 18
Souvenir Stands	(see area maps)
Spice Islands	14, 26
Stained Glass	14, 26
Storybook Land	6, 18
Strollers	3, 10
Submarine Voyage	7, 20
Sunkist Citrus House	10, 22
Sunkist, "I Presume"	12, 23
Sunsweet Prunes	10, 30
Sumey	5, 10
Swift's Market House	10, 30
Swiss Family Treehouse	5, 12
Tahitian Terrace	12, 23
Telephones	2 (see area maps)
Thanksgiving Celebration	29
Ticket Books	4 (see area maps)
Tiki's Tropical Traders	12, 26
Tinkerbell Toy Store	18, 27
Timex Watches	10, 25
Tobacco Shop	10, 26
Tom Sawyer Island Rafts	7, 16
Train Depot Snack Bar	10, 22
Treehouse, Swiss Family	5, 12
20,000 Leagues Exhibit	5, 20
Upjohn Pharmacy	10, 30
Welch's Grape Juice Bar	18, 24
Wheel Chairs	3, 10
Wonderland Music Shop	10, 26
Wurlitzer Music Hall	10, 30